



# Profile Overview

Version 2.0



---

## NES PROFILES

### Overview

---

1	introduction .....	2
2	profiles and scenarios.....	3
3	profiles included in this package .....	5
3.1	profile 1.0.....	5
3.2	profile 2.0.....	5
3.3	profile 3.0.....	6
3.4	profile 4.0.....	6
3.5	profile 5.0.....	6
3.6	profile 6.0.....	7
3.7	profile 7.0.....	7
3.8	profile 8.0.....	8

This document is published under the Creative Common Licence  
(<http://www.kerignard.com/i/ccinfo.htm>).



---

# NES PROFILES

## Overview

---

### 1 introduction

The Northern European Subset (NES) group was established to enable interoperability of procurement data between users of the Universal Business Language (UBL). UBL is a royalty-free library of XML documents addressing the requirements of electronic procurement and international trade and transportation. Its second version (UBL 2.0) was released as an OASIS standard in December 2006. NES members contributed extensively to the development of this version of the standard.

The focus of NES is to define the specific use of UBL 2.0 electronic procurement documents domestically and between the member countries. The definition covers semantic interoperability within and between all business sectors, public and private.

UBL 2.0 contains the following 22 procurement documents:

- sourcing
  - Catalogue Request, Catalogue, Catalogue Item Specification Update, Catalogue Pricing Update and Catalogue Deletion
  - Request for Quotation and Quotation
- ordering
  - Order, Order Response, Order Response Simple, Order Change and Order Cancellation
- fulfilment
  - Despatch Advice and Receipt Advice
- billing
  - Invoice, Credit Note, Debit Note and Self Billed Invoice and Self Billed Credit Note and Reminder
- payment (information)
  - Remittance Advice and Statement

It also contains a document Application Response and Attached Document which can be used in conjunction with other documents.

---

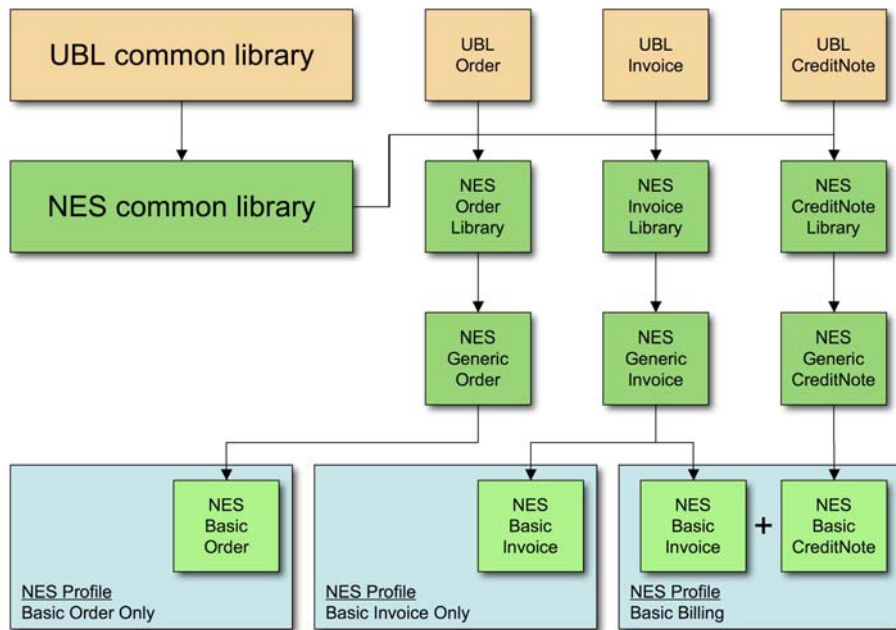
This first phase of NES addresses use in Northern Europe of the following subset of 8 documents:

- Catalogue, Catalogue Item Specification Update and Catalogue Pricing Update
- Order and Order Response Simple
- Invoice and Credit Note
- Application Response.

## NES PROFILES Overview

### 2 profiles and scenarios

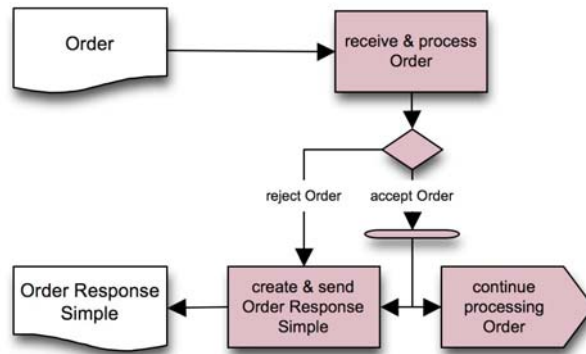
As well as initially restricting the number of documents used, NES restricts document content in terms of elements and the cardinality of elements.



NES contains restricted views of the UBL Common Library and the UBL documents listed above (the NES Common Library and NES document libraries). From these libraries, generic documents are derived e.g. the NES Generic Invoice. These generic documents are further restricted for use in particular business process contexts.

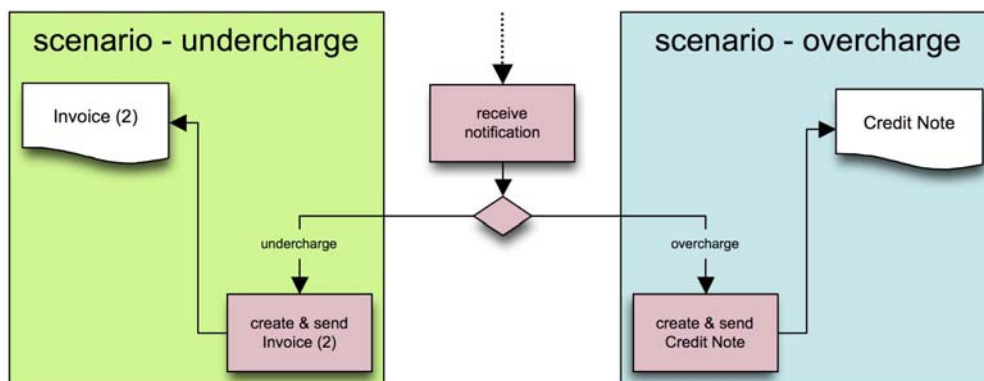
These contexts or 'profiles' describe design-time rules for documents within processes e.g. in the Basic Procurement profile, an Order is always followed by an Order Response Simple.

## NES PROFILES Overview



design time rule

The profiles also contain scenarios, describing run-time restrictions e.g. in the Basic Procurement profile, Invoice errors can be resolved by the issuance of a supplementary Invoice or a Credit Note, depending on whether the error is an overcharge or an undercharge.



run time rule



---

## NES PROFILES

### Overview

---

### 3 profiles included in this package

The profiles included in this NES package are:

#### 3.1 profile 1.0

Catalogue Only documents included:

- Catalogue
- Application Response

scenarios

- accepted Catalogue
- rejected Catalogue

This profile is used to send and receive Catalogues and updates to Catalogues in which entire Catalogue Lines are added, changed or deleted.

The profile includes a business level Application Response for acceptance/rejection of the Catalogue document.

#### 3.2 profile 2.0

Catalogue with Updates documents included:

- Catalogue
- Catalogue Item Specification Update
- Catalogue Pricing Update
- Application Response

scenarios

- accepted Catalogue
- rejected Catalogue
- accepted Catalogue Item Specification Update
- rejected Catalogue Item Specification Update
- accepted Catalogue Pricing Update
- rejected Catalogue Pricing Update

This profile is used to send and receive Catalogues and Catalogue updates in which entire Catalogue Lines are added, changed or deleted. It also allows only item specifications (not prices) to be updated in isolation via a Catalogue Item Specification Update document and prices (not item specifications) to be updated in isolation via a Catalogue Pricing Update document.

The profile includes a business level Application Response for acceptance/rejection of the Catalogue and Catalogue update documents.



---

## NES PROFILES

### Overview

---

#### 3.3 profile 3.0

Basic Order Only documents included:

- Order (basic)

scenarios

- accepted Order
- rejected Order

This profile comprises a restricted content Order for ease of implementation and minimal systems integration.

Order acceptance/rejection is external.

#### 3.4 profile 4.0

Basic Invoice Only documents included:

- Invoice (basic)

scenarios

- accepted Invoice
- rejected Invoice

This profile comprises a restricted content Invoice for ease of implementation and minimal systems integration. This Invoice is a self-contained document with respect to fiscal and legal requirements.

Invoice acceptance/rejection is external.

#### 3.5 profile 5.0

Basic Billing documents included:

- Invoice (basic)
- Credit Note (basic)

scenarios

- accepted Invoice
- Invoice undercharge
- Invoice overcharge
- Invoice contains wrong information

This profile comprises restricted content Invoice and Credit Note for ease of implementation and minimal systems integration. The profile allows for supplementary Invoices and Credit Notes to correct Invoice errors. This Invoice and the Credit Note are self-contained documents with respect to fiscal and legal requirements.

Invoice acceptance/rejection is external.



---

## NES PROFILES

### Overview

---

#### 3.6 profile 6.0

Basic  
Procurement

documents included:

- Order (basic)
- Order Response Simple
- Invoice (basic)
- Credit Note (basic)

scenarios

- accepted Order, accepted Invoice
- rejected Order
- accepted Order, Invoice overcharge
- accepted Order, Invoice undercharge
- accepted Order, Invoice contains wrong information

This profile combines the Basic Order and Basic Billing profiles and adds a simple 'accept/reject' response in the ordering phase. The billing documents also contain references to the Order to facilitate automated document matching at the Customer.

Acceptance/rejection of documents in the billing phase is external.

#### 3.7 profile 7.0

Simple  
Procurement

documents included:

- Order
- Order Response Simple
- Invoice
- Application Response
- Credit Note

scenarios

- accepted Order, accepted Invoice
- rejected Order
- accepted Order, Invoice overcharge
- accepted Order, Invoice undercharge
- accepted Order, Invoice contains wrong information

This profile resembles the Basic Procurement profile but adds a business level Application Response for the Customer to notify the Supplier of billing errors.

The content of the documents extended, beyond 'Basic', to the NES Document Library level (see 2 above).





---

## NES PROFILES

### Overview

---

#### 3.8 profile 8.0

Basic Billing with documents included:  
Dispute Response

- Invoice (basic)
- Application Response
- Credit Note (basic)

scenarios

- accepted Invoice
- Invoice undercharge
- Invoice overcharge
- Invoice contains wrong information

This profile resembles the Basic Billing profile but adds a business level Application Response for the Customer to notify the Supplier of billing errors.

In this profile, the Application Response is used only to notify a disputed Invoice or Credit Note; the explicit acceptance of an Invoice or Credit Note, if required, is external to this profile.